



Distributed by **Mustek**

APOLLO RANGE OF STANDARD FREE STANDING SERVER CABINETS

The Professional's Choice
The Industry Standard 19" Server Cabinets
in the Apollo range offer quick installation
and are extremely reliable



Made in South Africa
Manufactured to International Standards
Exported Globally



APOLLO RANGE

NETWORK SERVER CABINETS 600/800/1000 DEPTHS

12U, 16U, 20U, 25U, 34U, 38U, 42U, 47U

Our modern factory is equipped with the latest machinery which we use to produce industry leading server cabinets. Our server cabinets are used by a wide array of companies in telecommunication, IT, and a host of other industries for various applications.

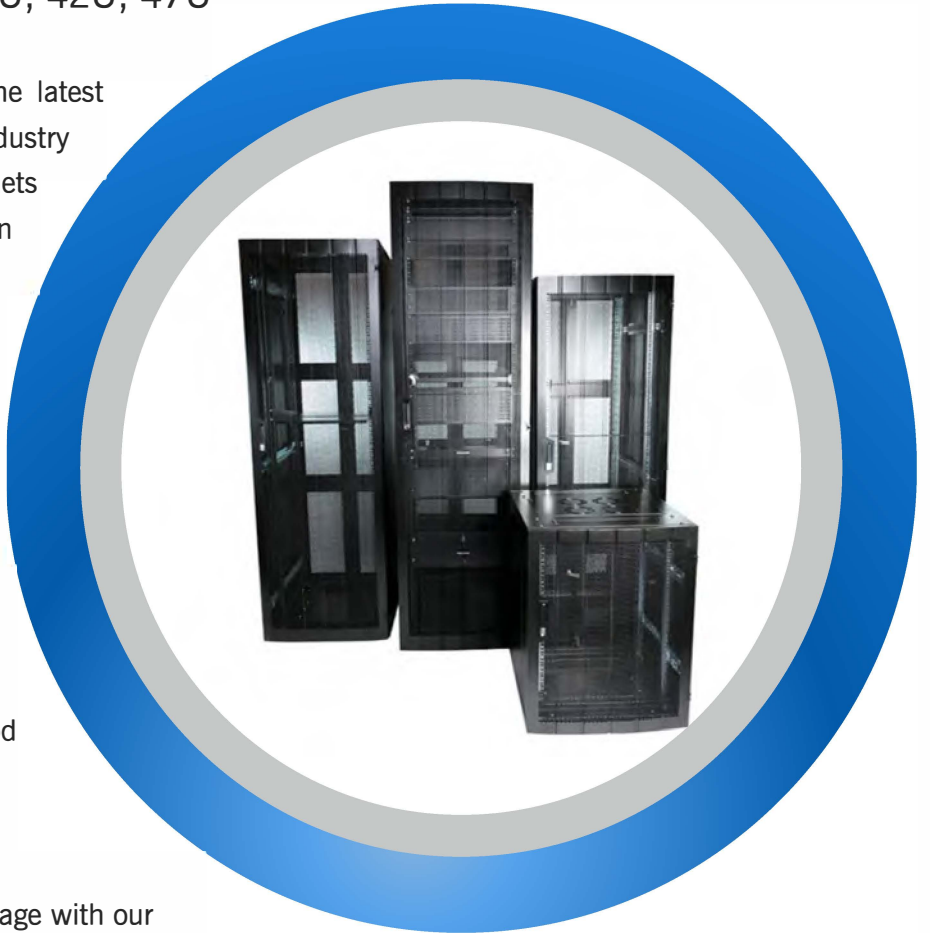
The Apollo Range is a top seller that is no exception. The server cabinets are manufactured from the finest materials to the highest global standards.

The Apollo Range of cabinets have proven over and over that they stand up to years of service and still retain their good looks and build integrity.

Server-Racks

Get the most out of your server room storage with our server rack and accessories. Our range offers a stable and durable platform for your valuable network and AV equipment We can help you:

- Neatly store and secure equipment
- Ensure easy access and monitoring
- Manage cooling and airflow issues
- Manage cable issues to reduce clutter
- Fit your equipment properly in its space with different size and mounting options



- 1 **Loading Capacity** 450 kg's
- 2 **Materials** High-quality cold rolled steel
- 3 **Thickness** Mounting profiles: 1.6mm | Mounting rails: 1.6mm | Other panels: 1.2mm
- 4 **Cooling Fan** Two/Four optional 120mm AC cooling fans
- 5 **Side panels** Removable
- 6 **Doors** Hexagonal mesh front door (option of glass) and Hexagonal mesh double rear doors
- 7 **Colors** Black-RAL9004, White-RAL7035, Grey-RAL7032
- 8 **Surface Finish** Degreasing, Pickling, Phosphating, 7 Tank Dip System Powder Coating
- 9 Cable entry glands provided top & bottom
- 10 Adjustable feet & or castors

Our Flat Packs packaging and transportation design is a unique feature that has become one of our highest selling products for its ease of delivery and storage





APOLLO RANGE

600mm Wide (19") Cabinets

| | Code | U | Height | Depth | Door | Kg's |
|-------------------|--------------|----|--------|-------|-------|------|
| 12u models | CP6612.GLA.B | 12 | 714 | 600 | Glass | 46 |
| | CP6612.PER.B | 12 | 714 | 600 | Perf | 39 |
| | CP6812.GLA.B | 12 | 714 | 800 | Glass | 52 |
| | CP6812.PER.B | 12 | 714 | 800 | Perf | 45 |
| | CP6012.GLA.B | 12 | 714 | 1000 | Glass | 59 |
| | CP6012.PER.B | 12 | 714 | 1000 | Perf | 51 |

| | Code | U | Height | Depth | Door | Kg's |
|-------------------|--------------|----|--------|-------|-------|------|
| 16u models | CP6616.GLA.B | 16 | 890 | 600 | Glass | 54 |
| | CP6616.PER.B | 16 | 890 | 600 | Perf | 45 |
| | CP6816.GLA.B | 16 | 890 | 800 | Glass | 61 |
| | CP6816.PER.B | 16 | 890 | 800 | Perf | 52 |
| | CP6016.GLA.B | 16 | 890 | 1000 | Glass | 68 |
| | CP6016.PER.B | 16 | 890 | 1000 | Perf | 59 |

| | Code | U | Height | Depth | Door | Kg's |
|-------------------|--------------|----|--------|-------|-------|------|
| 20u models | CP6620.GLA.B | 20 | 1070 | 600 | Glass | 62 |
| | CP6620.PER.B | 20 | 1070 | 600 | Perf | 51 |
| | CP6820.GLA.B | 20 | 1070 | 800 | Glass | 69 |
| | CP6820.PER.B | 20 | 1070 | 800 | Perf | 58 |
| | CP6020.GLA.B | 20 | 1070 | 1000 | Glass | 77 |
| | CP6020.PER.B | 20 | 1070 | 1000 | Perf | 66 |

| | Code | U | Height | Depth | Door | Kg's |
|-------------------|--------------|----|--------|-------|-------|------|
| 25u models | CP6625.GLA.B | 25 | 1290 | 600 | Glass | 72 |
| | CP6625.PER.B | 25 | 1290 | 600 | Perf | 59 |
| | CP6825.GLA.B | 25 | 1290 | 800 | Glass | 80 |
| | CP6825.PER.B | 25 | 1290 | 800 | Perf | 67 |
| | CP6025.GLA.B | 25 | 1290 | 1000 | Glass | 89 |
| | CP6025.PER.B | 25 | 1290 | 1000 | Perf | 76 |

| | Code | U | Height | Depth | Door | Kg's |
|-------------------|--------------|----|--------|-------|-------|------|
| 34u models | CP6634.GLA.B | 34 | 1690 | 600 | Glass | 90 |
| | CP6634.PER.B | 34 | 1690 | 600 | Perf | 72 |
| | CP6834.GLA.B | 34 | 1690 | 800 | Glass | 99 |
| | CP6834.PER.B | 34 | 1690 | 800 | Perf | 82 |
| | CP6034.GLA.B | 34 | 1690 | 1000 | Glass | 110 |
| | CP6034.PER.B | 34 | 1690 | 1000 | Perf | 93 |

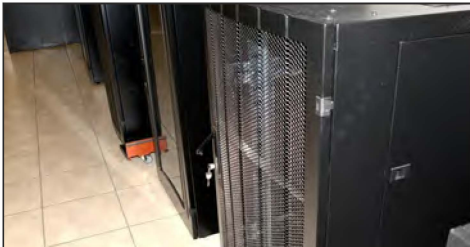
| | Code | U | Height | Depth | Door | Kg's |
|-------------------|--------------|----|--------|-------|-------|------|
| 38u models | CP6638.GLA.B | 38 | 1870 | 600 | Glass | 98 |
| | CP6638.PER.B | 38 | 1870 | 600 | Perf | 78 |
| | CP6838.GLA.B | 38 | 1870 | 800 | Glass | 108 |
| | CP6838.PER.B | 38 | 1870 | 800 | Perf | 88 |
| | CP6038.GLA.B | 38 | 1870 | 1000 | Glass | 120 |
| | CP6038.PER.B | 38 | 1870 | 1000 | Perf | 100 |

| | Code | U | Height | Depth | Door | Kg's |
|-------------------|--------------|----|--------|-------|-------|------|
| 42u models | CP6642.GLA.B | 42 | 2040 | 600 | Glass | 105 |
| | CP6642.PER.B | 42 | 2040 | 600 | Perf | 84 |
| | CP6842.GLA.B | 42 | 2040 | 800 | Glass | 116 |
| | CP6842.PER.B | 42 | 2040 | 800 | Perf | 95 |
| | CP6042.GLA.B | 42 | 2040 | 1000 | Glass | 129 |
| | CP6042.PER.B | 42 | 2040 | 1000 | Perf | 107 |

| | Code | U | Height | Depth | Door | Kg's |
|-------------------|--------------|----|--------|-------|-------|------|
| 47u models | CP6647.GLA.B | 47 | 2260 | 600 | Glass | 114 |
| | CP6647.PER.B | 47 | 2260 | 600 | Perf | 90 |
| | CP6847.GLA.B | 47 | 2260 | 800 | Glass | 127 |
| | CP6847.PER.B | 47 | 2260 | 800 | Perf | 103 |
| | CP6047.GLA.B | 47 | 2260 | 1000 | Glass | 141 |
| | CP6047.PER.B | 47 | 2260 | 1000 | Perf | 117 |



Quick Adjust System



Curved mesh door 80% air flow



H/D Load bearing levelling feet



Swing Lever Locking



Roll into position Castors (option)



Saloon type rear doors